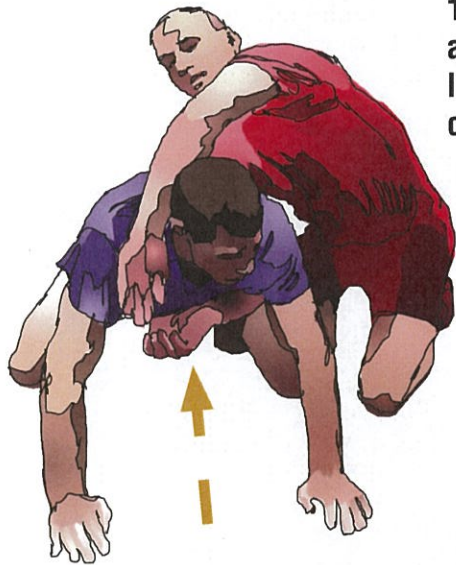


# The Assassin (A Kolat Variation) Potentially Dangerous Which May Become Illegal



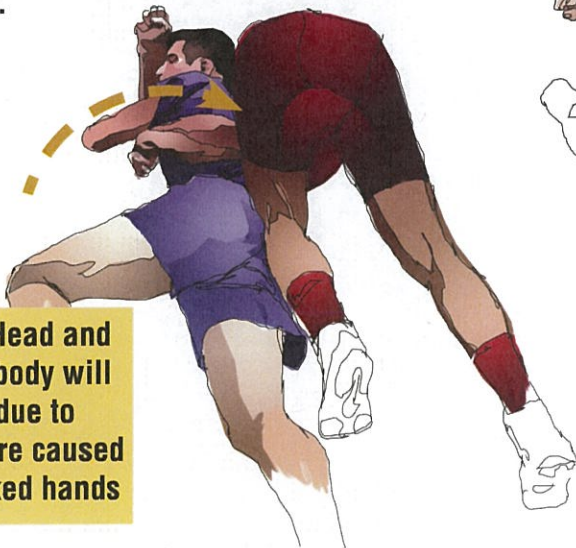
1. Set-up- **Wrestler A** reaches over head and under shoulder w/ far side arm to lock & vice hands in side of wrestler B's neck .



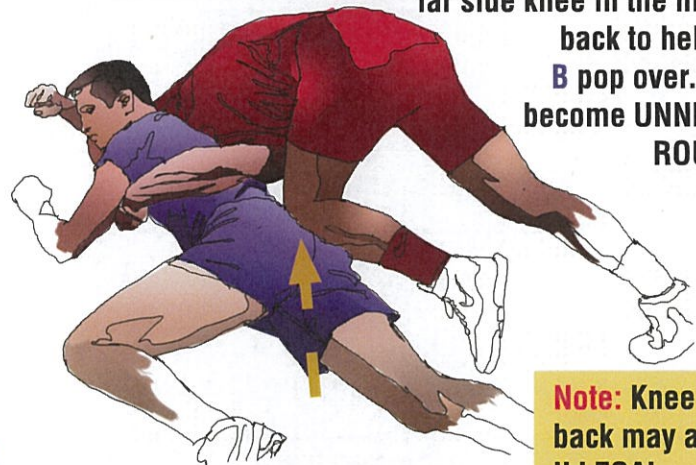
2. **Wrestler A** crunches & pulls wrestler B into his knee as wrestler B breaks down to mat.

**Note:** THE OFFICIAL'S POSTION IS CRITICAL TO SEE DANGEROUS POINTS.

3. **Wrestler A** steps across w/ far leg (a sit out step) pulling across wrestler B's head, neck and throat to his back. This may become **ILLEGAL** if across the throat.



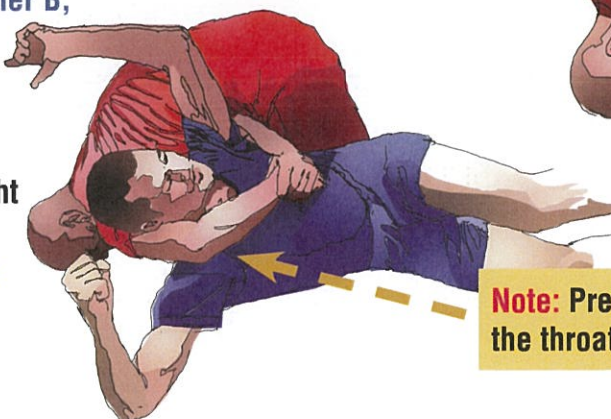
**Note:** Head and upper body will rotate due to pressure caused by locked hands



4. **Wrestler A** may plant his far side knee in the hip or lower back to help wrestler B pop over. This may become **UNNECESSARY ROUGHNESS**.

**Note:** Knee in lower back may also be **ILLEGAL**

5. As **wrestler A** turns **wrestler B**, he will keep his hips parallel to mat and tight against **wrestler B's** hip.



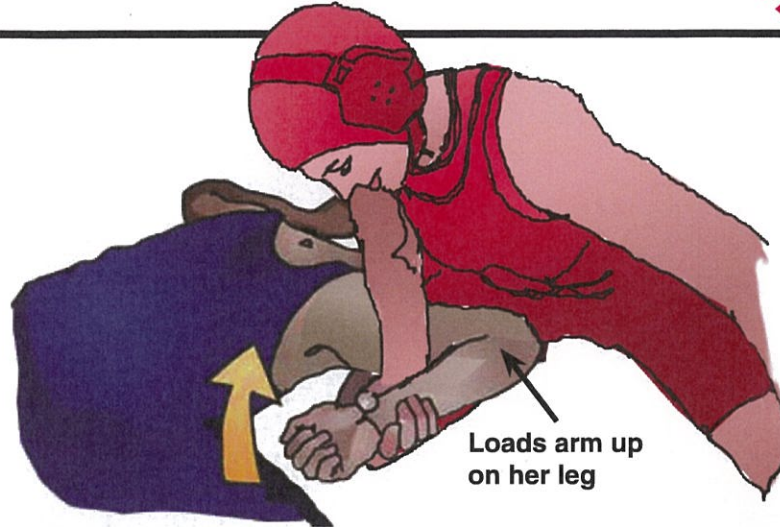
**Note:** Pressure across the throat



6. As **wrestler A** finishes the move, notice **wrestler B's** head propped up by **wrestler A's** arm pit and upper arm forcing the chin to be pinched against the arm across the throat. This has definitely become a choke hold ... **ILLEGAL**.

# Blair Backside Tip

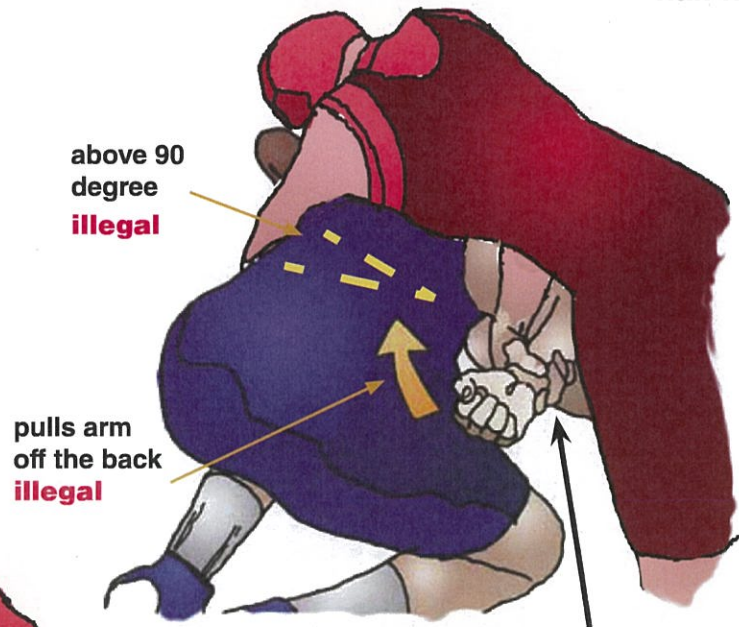
(Hammerlock/Twisting Hammerlock)



Set-up 1A. **Wrestle A** pulls arm out from under **wrestler B**, loads up on her leg.

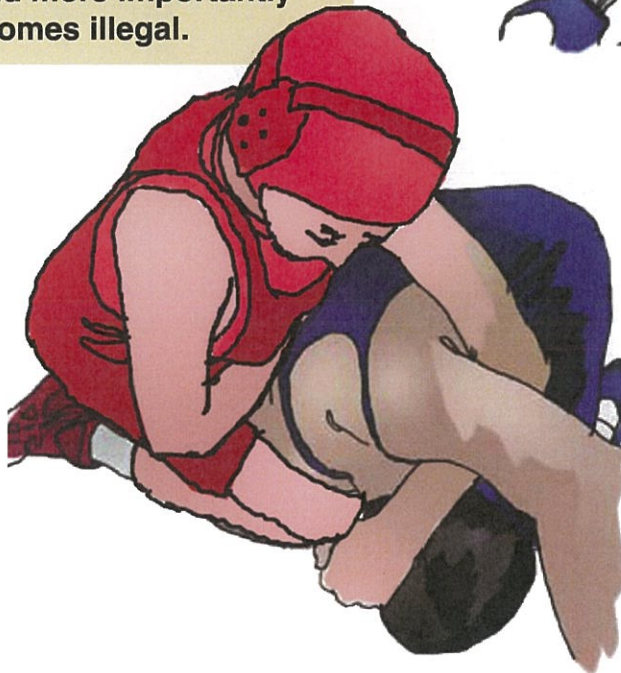
1B. **Wrestle A** pulls **wrestler B's** arm up and across his back, she reaches for a backside half nelson.

This situation may become potentially dangerous. The official must be in position to see the arm of **wrestler B**. The elbow and shoulder may be injured.



**CONCERN!** If the official is out of position, he/she will miss the moment this becomes potentially dangerous, and more importantly when this becomes illegal.

If the arm of **wrestler B** moves up the back beyond 90 degrees-**rule 7-1-5b** describes a hammer lock. if the elbow is pulled away from the back-**rule 1-1-5c** explains a twisting hammerlock, both are **illegal**.



**NOTE:** Officials must adjust their position to see the belly side of **wrestler A** to see the position of **Wrestler B's** arm.